



# **QUICK SIDEWALL REPAIR KIT - APPLICATION GUIDELINES**

# SUPERKWIK KIT



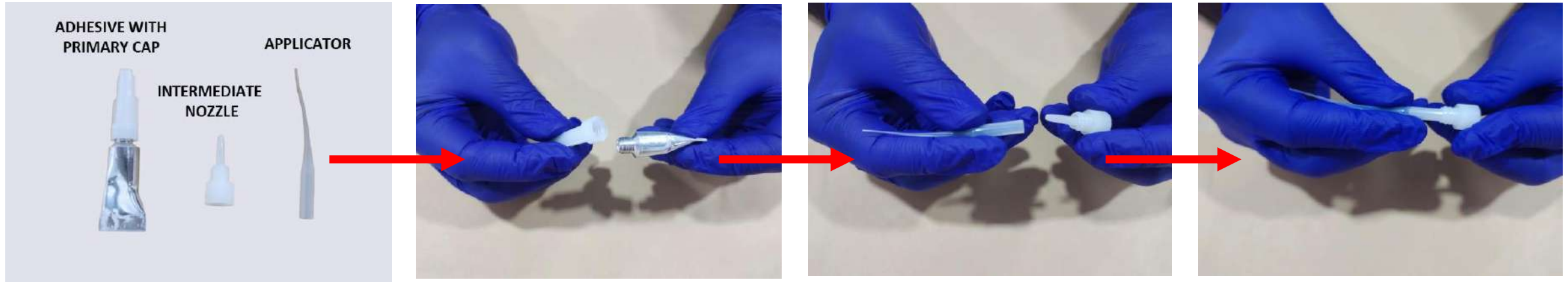
- 1. Container Box – 1 No**
- 2. Special Adhesive in 2gms tubes – 6 Nos**
- 3. Intermediate Nozzle – 6 Nos.**
- 4. Applicator – 10 Nos.**
- 5. Blade Handle with 3 Blades.**
- 6. 80 Grit Sander – 20 Nos.**
- 7. Rubber patches.**
  - a. Sizes 130x93x5mm – 3 Nos.**
  - b. Sizes 76x38x3mm – 3 Nos.**

# PREPARATION



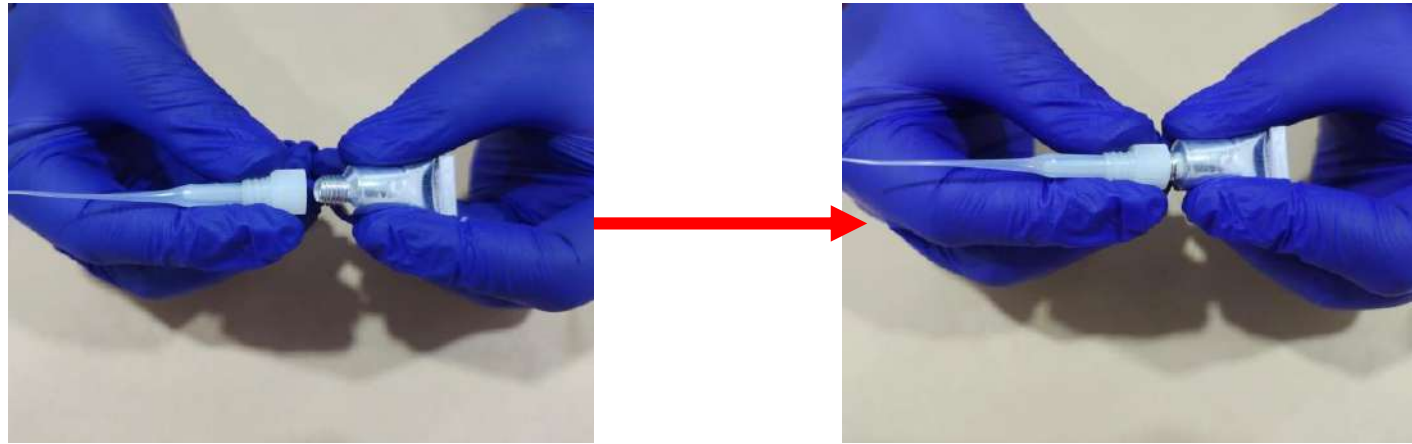
- **Remove the Object and Deflate:**
  - Carefully remove any object lodged in the tire.
  - Deflate the air out of the tire completely.
- **Clean the Area:**
  - If necessary, clean the area around the puncture using mild soap and water.
  - Allow the area to dry **completely** before proceeding.

# NOZZLE AND APPLICATOR SETUP PROCEDURE



- **This Kit is supplied with a special Adhesive in tube with an Intermediate Nozzle and an Applicator.**
- **To Open the Adhesive Bottle for use:**
  - Remove the primary cap.
  - Take the Intermediate nozzle and tightly attach the applicator to it.

# NOZZLE AND APPLICATOR SETUP PROCEDURE



- **To Open the Adhesive Bottle for use:**
  - Now tightly screw up and fix the above assembly (intermediate nozzle + applicator) on to the adhesive tube mouth.
  - Tighten the assembly clockwise. This will break open the seal and allow the adhesive to come out in tiny droplets through the applicator.



# MARKING THE INJURY



- **Marking the Injury:**
  - A marking is made as shown in the image, to determine the center and the size of the Injury.

# PATCH SIZING AND PLACEMENT



- **Determine the Size of the Patch:**
  - The size of the patch should be large enough to cover the damaged area.
  - Ensure at least **12 - 15mm (½ inch)** of coverage around the puncture or damage.
- **Mark the Patch Placement:**
  - Place the patch on the tire and trace its outline using a marker.

# ADHESIVE APPLICATION INSIDE THE SLICE



- **Expose the Slice:**
  - Insert a knife or screwdriver into the puncture to gently lift and reveal the sliced edges.
  - ⚠ *If the cut is shaped like an "A" or "+", do not attempt to open both slits at once.*
- **Apply Adhesive to Inner Edges:**
  - Use the applicator tip to add a **small amount** of adhesive along the **edges of the slice**.



# ADHESIVE APPLICATION INSIDE THE SLICE



- **Seal the Slice:**
  - Slowly pull the tool out while aligning and pressing the edges of the slice back together.
- **Add Adhesive into the Puncture:**
  - Using the applicator tip, carefully squeeze adhesive directly **into** the puncture area.

# SURFACE PREPARATION FOR PATCH APPLICATION



- **Clean Excess Adhesive:**
  - Wipe away any adhesive that may have smeared around the area.
- **Skiving off Raised Branding:**
  - If there is a raised Branding, then using the special heavy duty blade provided, skive off the raised letterings.
  - Ensure that excessive rubber is not skived off from the sidewall area.

# SURFACE PREPARATION FOR PATCH APPLICATION



- **Sand the Area:**
  - Use 80-grit sandpaper to roughen the surface around the damaged area until fresh rubber is visible.
- **Remove Adhesive Smears:**
  - Lightly sand off any excess adhesive from the tire surface.



# ADHESIVE APPLICATION FOR PATCH



- **Apply Adhesive to Tire Only:**
  - Use the applicator tip to apply **small drops** of adhesive **on the tire** within the marked area— Approximately **25 small drops per square inch**.

**⚠ Do not apply adhesive to the patch itself.**

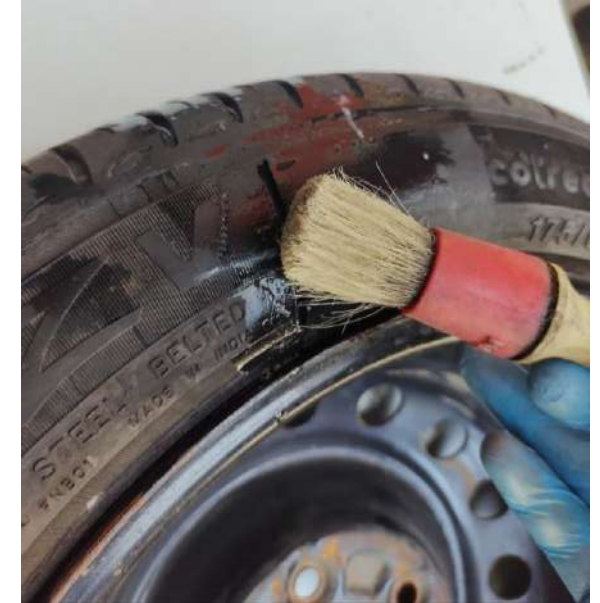


# PATCH APPLICATION



- **Place the Patch:**
  - Align and place the patch over the adhesive along the marked outline.
- **Secure the Patch:**
  - Hold the patch firmly in place for at least **60 seconds** to ensure bonding.
  - Firmly press all the four corners and edges to ensure that the corners bond perfectly.

# CURING & FINAL INSPECTION



- **Allow to Cure:**
  - Let the adhesive cure for **at least 1 hour** before inflating the tire.
- **Inflate Slowly:**
  - Gradually inflate the tire and inspect for any leaks by applying soap solution either by using a brush or bottle spray-gun.

# LEAK FIX (IF NEEDED)



- **If Leak is Detected:**
- Deflate the tire.
- Use pliers to lift the edge of the patch around the leaking spot.
- Apply a small drop of adhesive directly at the leak.
- Press and hold firmly for 30 seconds.
- Let it rest for another 30 seconds before re-inflating.

**⚠ Note: Always recap the adhesive bottle with the applicator tip to prevent drying.**

**THANK YOU**