

---

# TUBE PUNCTURE REPAIR

## Application Guidelines



# TUBE REPAIR APPLICATION GUIDELINES

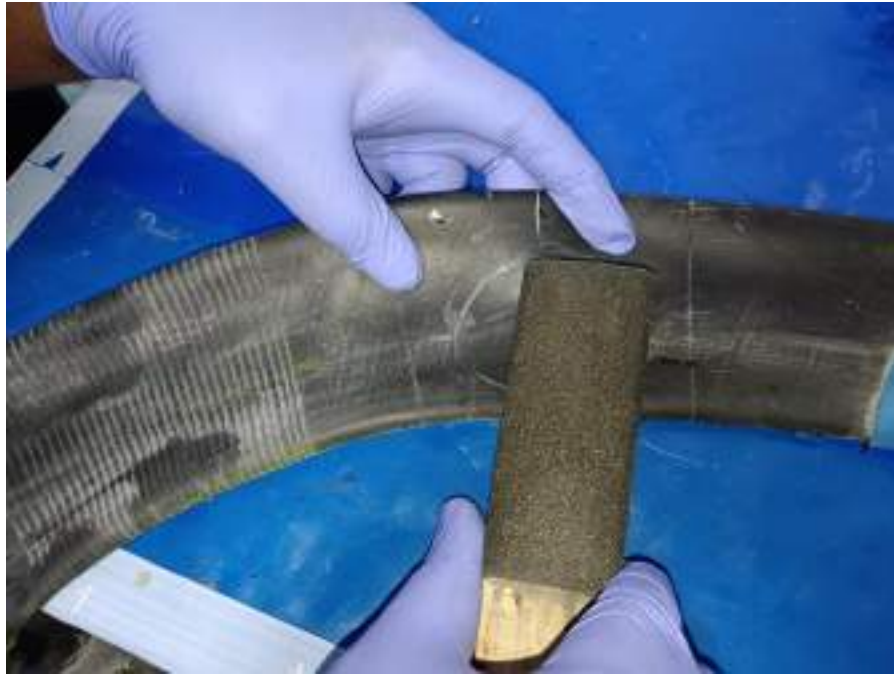


**Identify the puncture by immersing the inflated tube into water to find the leak.**

**Identify the puncture and select the size of patch required for the puncture.  
Mark the area of the puncture that needs to be buffed using a marker.**



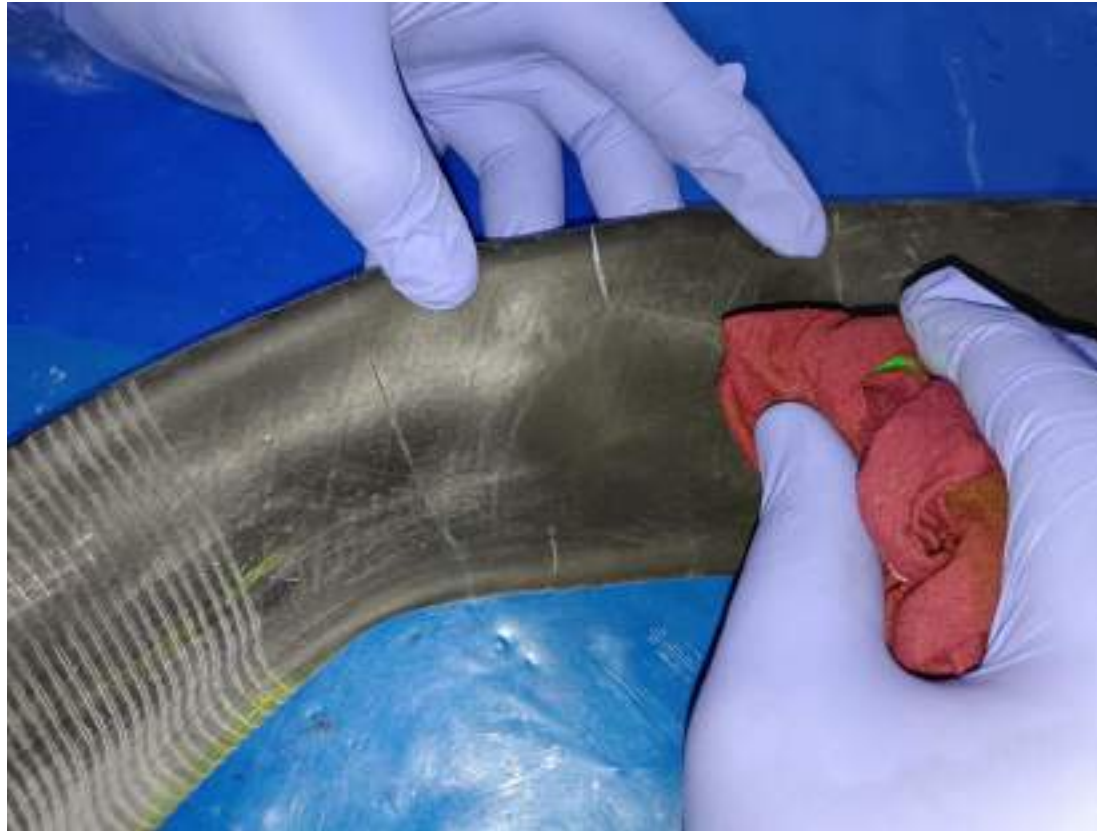
# TUBE REPAIR APPLICATION GUIDELINES



**Sand the marked area using a hand held wooden sander.  
Ensure that the entire marked area is uniformly sanded/buffed.**



# TUBE REPAIR APPLICATION GUIDELINES



**Clean the sanded area using a CLEAN DRY CLOTH.**

**Ensure that oil or any other material like sand/water, does not contaminate the sanded area**



# TUBE REPAIR APPLICATION GUIDELINES



**Apply a thin coat of Kwik Sol on the prepared area and let it dry.  
Ensure that there is no contamination on this coated area.  
Give about 5 minutes drying time.**



# TUBE REPAIR APPLICATION GUIDELINES



**Remove the film from the Tube patch and make sure your fingers do not touch the exposed surface of the patch.**



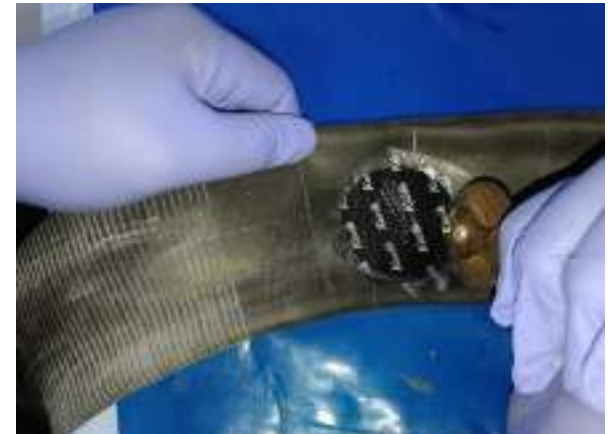
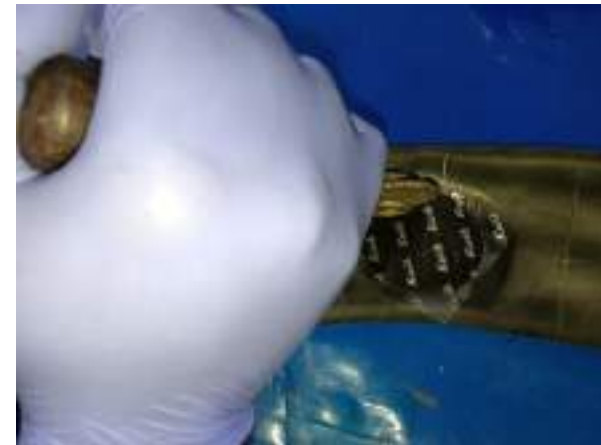
# TUBE REPAIR APPLICATION GUIDELINES



**Stick the patch centred over the puncture hole and press firmly**



# TUBE REPAIR APPLICATION GUIDELINES

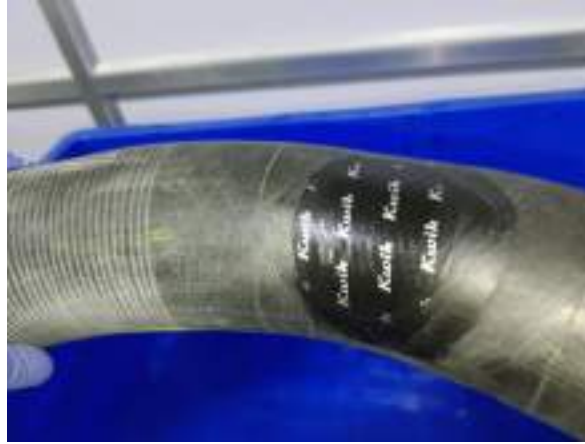


**Stitch the patch from the center to either sides using a hand Stitcher.**





# TUBE REPAIR APPLICATION GUIDELINES



**Inflate the tube and check for any air leak by immersing the tube in water. Now the tube is ready for use.**



---

**THANK YOU**



Kwik Patch Pvt., Ltd.,